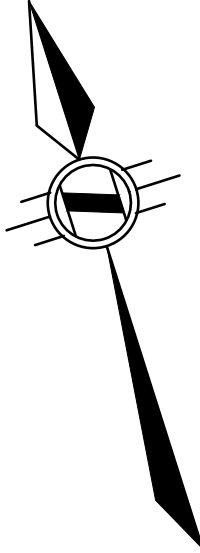


TOPOGRAPHIC SURVEY  
OF PART OF  
**BLOCK 77**  
REGISTERED PLAN 62M-616  
IN THE  
**CITY OF HAMILTON**

SCALE 1:200 METRIC  
0 4 8 12 metres

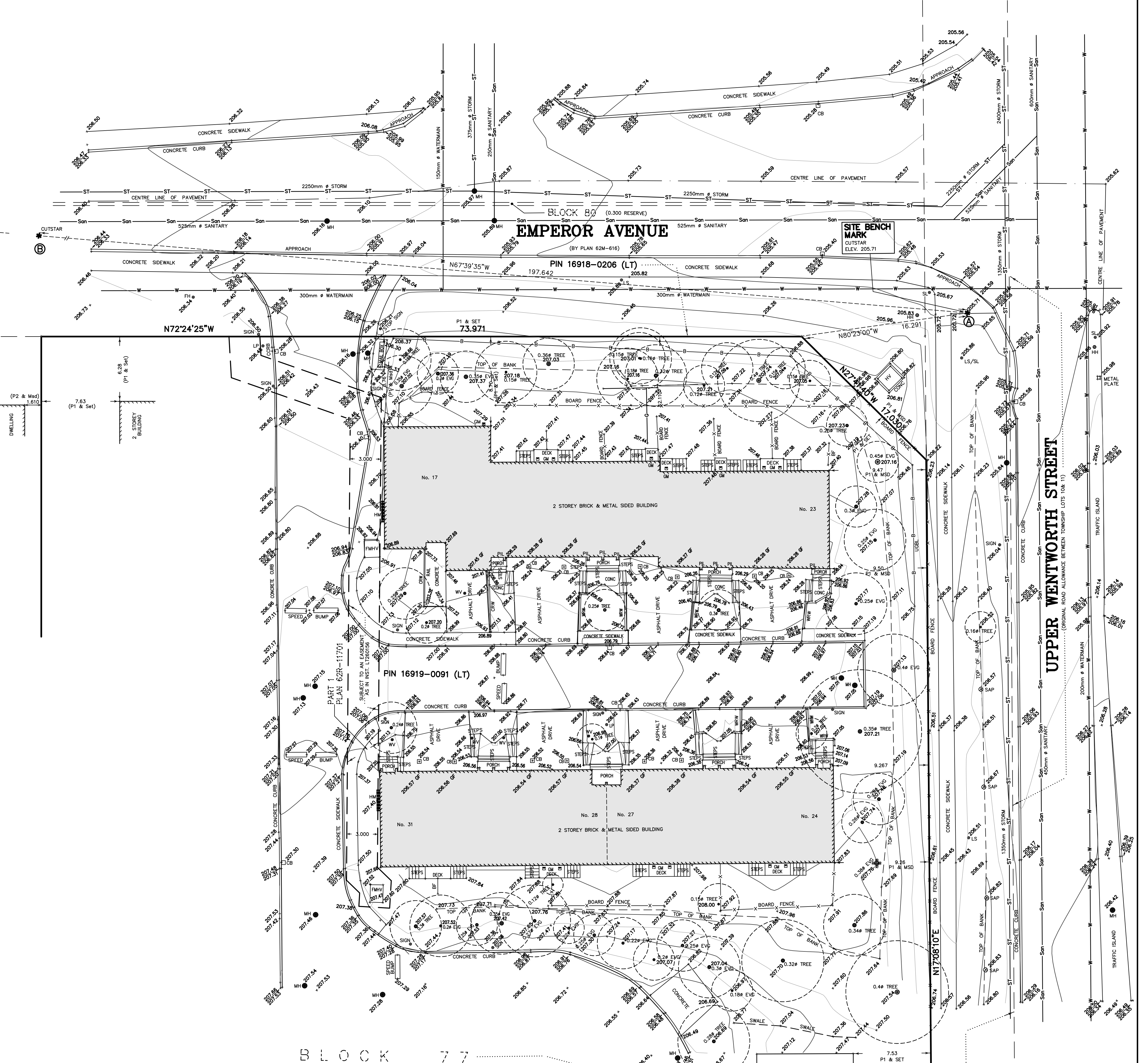
S.D. McLAREN, O.L.S. - 2020



BALHARBOROUGH DRIVE

36.576

S&B (OU)



PLAN 62M-616

**NOTE:**  
UNDERGROUND SERVICE AND UTILITY LOCATIONS WERE LOCATED BY URBEX MANAGEMENT LTD. DRAWING No. 88-S-66 (SHEET 3)  
UNDERGROUND SERVICE AND UTILITY LOCATIONS MUST BE VERIFIED PRIOR TO CONSTRUCTION  
INVERTS MUST BE VERIFIED PRIOR TO CONSTRUCTION

**BEARING NOTE:**  
BEARINGS ARE UTM GRID, DERIVED FROM OBSERVED REFERENCE POINTS A AND B, BY REAL TIME NETWORK OBSERVATIONS, UTM ZONE 17, NAD83 (CSRS) (2010.0)

**NOTE:**  
DISTANCES ARE GROUND AND CAN BE CONVERTED TO GRID BY MULTIPLYING BY THE COMBINED SCALE FACTOR OF 0.999676288

**INTEGRATION DATA**

POINT ID	NORTHING	EASTING
ORP @	4783843.872	591682.501
ORP @	4783918.971	591499.757

COORDINATES CANNOT, IN THEMSELVES, BE USED TO RE-ESTABLISH CORNERS OR BOUNDARIES SHOWN ON THIS PLAN.

**LEGEND:**

□	DENOTES MONUMENT SET	—	DENOTES PROPERTY BOUNDARY
■	MONUMENT FOUND	—	BUILDING BOUNDARY
IB	IRON BAR	—	BELL CABLE
PB	PLASTIC BAR	—	GAS MAIN
CC	CUT CROSS	—	WATER MAIN
SB	STANDARD IRON BAR	—	SANITARY SEWER
SSB	SHORT STANDARD IRON BAR	—	STORM SEWER
824	A.T. McLAREN, O.L.S.	—	OVERHEAD UTILITIES
OU	ORIGIN UNKNOWN	—	BURIED HYDRO LINES
Mtd	MEASURED	—	CANOPY
P1	PLAN BY ASHENHURST, NOUMENS, DATED DEC. 6 1990	—	TREE CANOPY
P2	PLAN BY A.L. CLARKE, O.L.S., DATED MAY 22, 1992	—	SAPLING
PH	MANHOLE	—	
CB	CATCH BASIN	—	
PL	PILLAR	—	
HM	HYDRO METER	—	
GM	GAS METER	—	
HC	HYDRO VAULT	—	
CONC	CONCRETE	—	
HH	HAND HOLE	—	
SL	STOP LIGHT	—	
LS	LIGHT STANDARD	—	
PH	FIRE HYDRANT	—	
WV	WATER VALVE	—	
DS	DOOR SILL	—	
WF	WOOD RETAINING WALL	—	
FMHV	FLUSH MOUNT HYDRO VAULT	—	
EVG	EMERGENT	—	
Ø	DIAMETER	—	
Ø	NOT TO SCALE	—	

**BENCHMARK:**  
MONUMENT 07720090009  
ROUND IRON BAR WITH BRASS CAP  
LOCATED IN HAMILTON IN ELMAR PARK WEST OF THE INTERSECTION OF BRIGADE DRIVE & EMPEROR AVENUE 30m WEST OF THE CENTRELINE OF BRIGADE DRIVE  
ELEVATION: 209.445 METRES CGVD-1928:1978

**METRIC NOTE:**  
DISTANCES AND COORDINATES SHOWN ON THIS PLAN ARE IN METRES AND CAN BE CONVERTED TO FEET BY DIVIDING BY 0.3048

**SURVEYOR'S CERTIFICATE:**  
I CERTIFY THAT:  
1. THIS SURVEY AND PLAN ARE CORRECT AND IN ACCORDANCE WITH THE SURVEYORS ACT AND THE REGULATIONS MADE UNDER THEM  
2. THE SURVEY WAS COMPLETED ON THE 10th DAY OF JUNE, 2020

JULY 8, 2020  
DATE

S. DAN McLAREN, O.L.S.

© S.D. McLAREN, O.L.S. - 2020. NO PERSON MAY COPY, REPRODUCE, DISTRIBUTE OR ALTER THIS PLAN IN WHOLE OR IN PART WITHOUT THE WRITTEN PERMISSION OF S.D. McLAREN, O.L.S.

**A.T. McLaren Limited**  
LEGAL AND ENGINEERING SURVEYS

69 JOHN STREET SOUTH, SUITE 230  
HAMILTON, ONTARIO, L8N 2B9  
PHONE (905) 527-8559 FAX (905) 527-0032

Drawn: J.B. Checked: RBM. Date: 1:200. Dwg No: 36367