

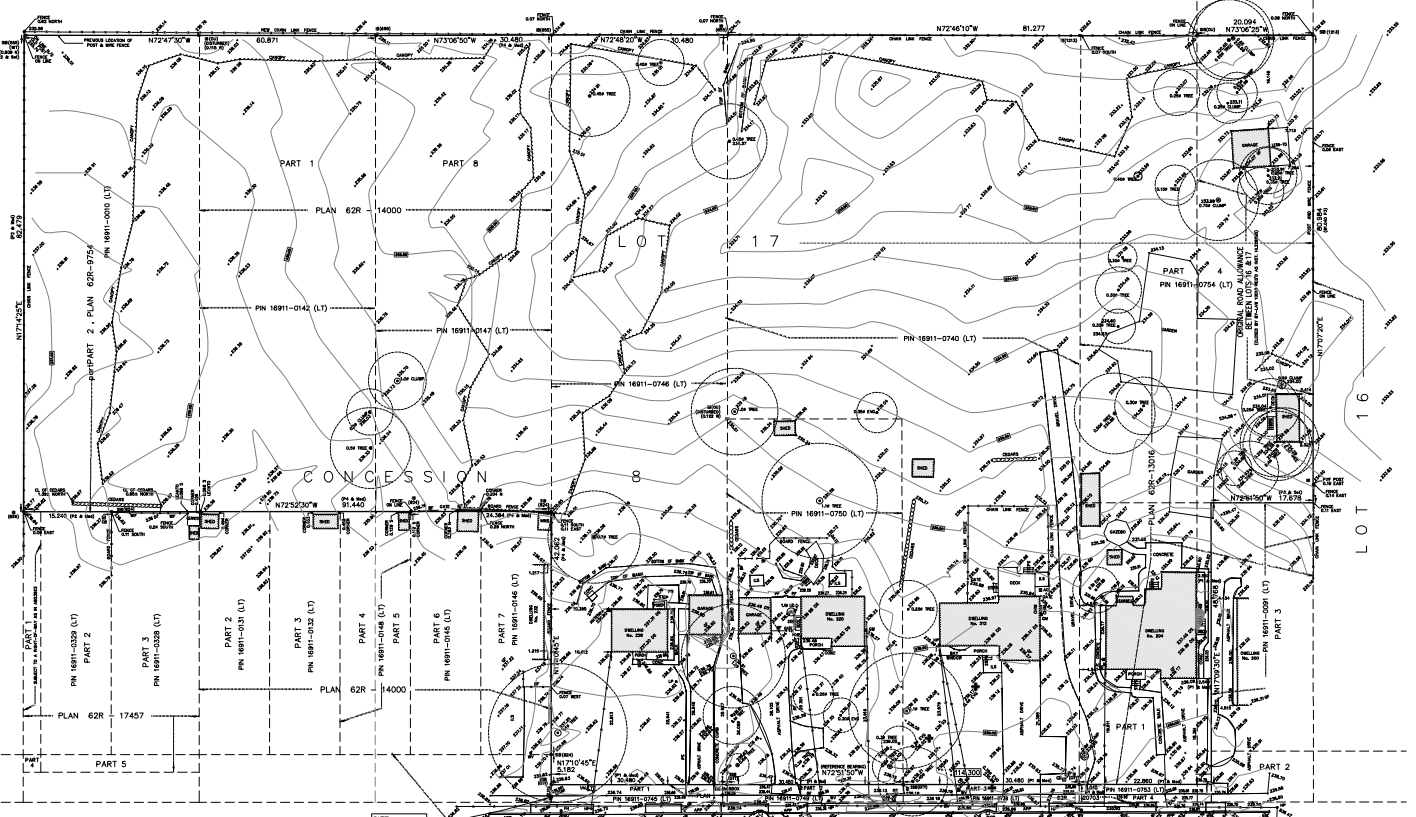
TOPOGRAPHIC SURVEY
 of Part of
 LOT 17
 CONCESSION 8
 AND PART OF
 ROAD ALLOWANCE BETWEEN LOTS 16 AND 17
 CLOSED BY BY-LAW 10010 RECD AS INST. H.232025
 GEORGIC
 TOWNSHIP OF BARTON
 IN THE
CITY OF HAMILTON
 SCALE 1:400 METRIC
 S.D. McLAREN, O.L.S. - 2018

PART 1, PLAN 62R - 19028
 PIN 16911-0379 (LT)

PART 2
 PLAN 62R-19022
 PIN 16911-0366 (LT)

PART 1, PLAN 62R-18028
 PIN 16911-0359 (LT)

PART 2, PLAN 62R-1975
 PIN 16911-0300 (LT)



SITE
 BENCHMARK
 827-2000

RYMAL ROAD WEST
 (EXIST. ROAD BOUNDARIES (E. PORTION OF SURVEY))
 PIN 16911-0377 (LT)

NOTE:
 LAYER OF ASPHALT NEEDS TO BE APPLIED

NOTE:
 UNDERGROUND SERVICE AND UTILITY LOCATIONS WERE DERIVED FROM
 DRAWING BY S. LINDSELY & ASSOCIATES LIMITED SURVING INC., 2015.
 UNDERGROUND SERVICE AND UTILITY LOCATIONS MUST BE VERIFYED
 PRIOR TO CONSTRUCTION.
 RIGHTS MUST BE OBTAINED PRIOR TO CONSTRUCTION.

BENCHMARK:
 MONUMENT 0770000000
 ROUND IRON BAR WITH BRASS CAP
 LOCATED IN GRABBER'S 100M PART OF
 CENTRAL END OF WESTERN STREET
 50M NORTH OF CENTRELINE OF RYMAL
 ROAD AND EAST OF TRAFFIC SWITCHBOX
 ELEVATION 239.00M (MVD) 0708-1928

- LEGEND:**
- 01.75m
 - 02.25m
 - 02.75m
 - 03.25m
 - 03.75m
 - 04.25m
 - 04.75m
 - 05.25m
 - 05.75m
 - 06.25m
 - 06.75m
 - 07.25m
 - 07.75m
 - 08.25m
 - 08.75m
 - 09.25m
 - 09.75m
 - 10.25m
 - 10.75m
 - 11.25m
 - 11.75m
 - 12.25m
 - 12.75m
 - 13.25m
 - 13.75m
 - 14.25m
 - 14.75m
 - 15.25m
 - 15.75m
 - 16.25m
 - 16.75m
 - 17.25m
 - 17.75m
 - 18.25m
 - 18.75m
 - 19.25m
 - 19.75m
 - 20.25m
 - 20.75m
 - 21.25m
 - 21.75m
 - 22.25m
 - 22.75m
 - 23.25m
 - 23.75m
 - 24.25m
 - 24.75m
 - 25.25m
 - 25.75m
 - 26.25m
 - 26.75m
 - 27.25m
 - 27.75m
 - 28.25m
 - 28.75m
 - 29.25m
 - 29.75m
 - 30.25m
 - 30.75m
 - 31.25m
 - 31.75m
 - 32.25m
 - 32.75m
 - 33.25m
 - 33.75m
 - 34.25m
 - 34.75m
 - 35.25m
 - 35.75m
 - 36.25m
 - 36.75m
 - 37.25m
 - 37.75m
 - 38.25m
 - 38.75m
 - 39.25m
 - 39.75m
 - 40.25m
 - 40.75m
 - 41.25m
 - 41.75m
 - 42.25m
 - 42.75m
 - 43.25m
 - 43.75m
 - 44.25m
 - 44.75m
 - 45.25m
 - 45.75m
 - 46.25m
 - 46.75m
 - 47.25m
 - 47.75m
 - 48.25m
 - 48.75m
 - 49.25m
 - 49.75m
 - 50.25m
 - 50.75m
 - 51.25m
 - 51.75m
 - 52.25m
 - 52.75m
 - 53.25m
 - 53.75m
 - 54.25m
 - 54.75m
 - 55.25m
 - 55.75m
 - 56.25m
 - 56.75m
 - 57.25m
 - 57.75m
 - 58.25m
 - 58.75m
 - 59.25m
 - 59.75m
 - 60.25m
 - 60.75m
 - 61.25m
 - 61.75m
 - 62.25m
 - 62.75m
 - 63.25m
 - 63.75m
 - 64.25m
 - 64.75m
 - 65.25m
 - 65.75m
 - 66.25m
 - 66.75m
 - 67.25m
 - 67.75m
 - 68.25m
 - 68.75m
 - 69.25m
 - 69.75m
 - 70.25m
 - 70.75m
 - 71.25m
 - 71.75m
 - 72.25m
 - 72.75m
 - 73.25m
 - 73.75m
 - 74.25m
 - 74.75m
 - 75.25m
 - 75.75m
 - 76.25m
 - 76.75m
 - 77.25m
 - 77.75m
 - 78.25m
 - 78.75m
 - 79.25m
 - 79.75m
 - 80.25m
 - 80.75m
 - 81.25m
 - 81.75m
 - 82.25m
 - 82.75m
 - 83.25m
 - 83.75m
 - 84.25m
 - 84.75m
 - 85.25m
 - 85.75m
 - 86.25m
 - 86.75m
 - 87.25m
 - 87.75m
 - 88.25m
 - 88.75m
 - 89.25m
 - 89.75m
 - 90.25m
 - 90.75m
 - 91.25m
 - 91.75m
 - 92.25m
 - 92.75m
 - 93.25m
 - 93.75m
 - 94.25m
 - 94.75m
 - 95.25m
 - 95.75m
 - 96.25m
 - 96.75m
 - 97.25m
 - 97.75m
 - 98.25m
 - 98.75m
 - 99.25m
 - 99.75m
 - 100.25m
 - 100.75m

METRIC NOTE:
 DISTANCES SHOWN ON THIS
 PLAN ARE IN METERS AND
 SHALL BE CONSIDERED AS SET
 BY DIVISION 6.3.2

BEARING NOTE:
 BEARINGS ARE GIVEN AND ARE REFERRED
 TO THE INTERIOR OF THE LOT
 AND ARE CONSIDERED AS SET
 BY DIVISION 6.3.2

SURVEYOR'S CERTIFICATE:
 I, the undersigned, being a duly qualified
 surveyor in the Province of Ontario, do hereby
 certify that this plan was prepared by me
 or under my direct supervision and that I am
 a duly qualified person in respect of this
 work.
 DATED AT _____ ON _____ 2018
 S. DAN McLAREN, O.L.S.

NO.	REVISION	DATE
1	ORIGINAL SURVEY TO ROAD	2018.09.04
2	DESCRIPTION	

REVISIONS:

2018.09.04 S.D. McLAREN O.L.S.
 S.D. McLAREN Limited
 400 KING STREET WEST, SUITE 1000
 TORONTO, ONTARIO M5X 1C5
 TEL: 416-593-8100 FAX: 416-593-8101
 WWW.SDMCLAREN.COM