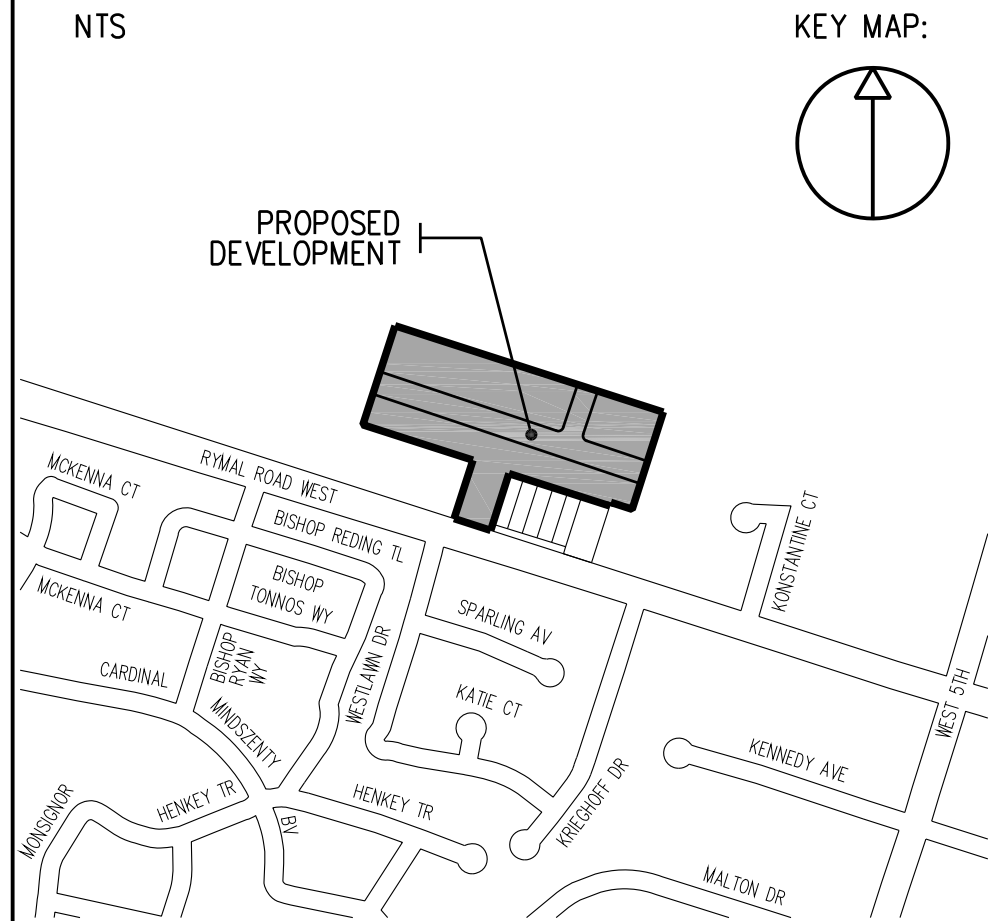


D0189-P00-20 FOREST BREEZE ESTATES



**LEGEND:**

BORE HOLE	BH#	CURB STOP
TEST PIT	TP#	BLOW-OFF VALVE
DUAL PRIVATE DRAINS	D	FIRE HYDRANT
SANITARY PRIVATE DRAIN	S	GATE VALVE
SUMP PUMP	SP	
WALK OUT	WO	
ORDINARY CONSTRUCTION	OC	
FENCE		
TRANSFORMER		
HYDRO POLE OR STREET LIGHT	HP • OR • SL	
PEDESTAL (BELL AND/OR CABLE)		
WHEELCHAIR RAMP AS PER (OPSD 310.030) (DEPRESSED CURB)		

**FOR APPROVALS**


No.	DATE	BY	REVISION

**BENCHMARK:**  
STATION: 07720020068  
TOWNSHIP: ROUND IRON BAR WITH BRASS CAP LOCATED IN GLANBROOK 10.0m EAST OF CENTRELINE OF WEST 5th STREET 25.0m NORTH OF CENTRE LINE OF RYMAL ROAD 3.0m EAST OF SIDEWALK 8.0m NORTHWEST OF TRAFFIC SWITCHBOX.  
ORTHOMETRIC ELEV: 229.005 metres

**CONSULTANT:**  
**URBEX ENGINEERING LIMITED**  
161 REBECCA STREET  
HAMILTON ON L8R 1B9  
TEL 905-522-3328  
FAX 905-522-0452  
EMAIL info@urbex.biz

**MUNICIPALITY:**  
THE CITY OF HAMILTON  
FOREST BREEZE ESTATES  
HAMILTON, ONTARIO

**ULTIMATE PARKING PLAN**

**CITY FILE NUMBER:**  
FC-20-119

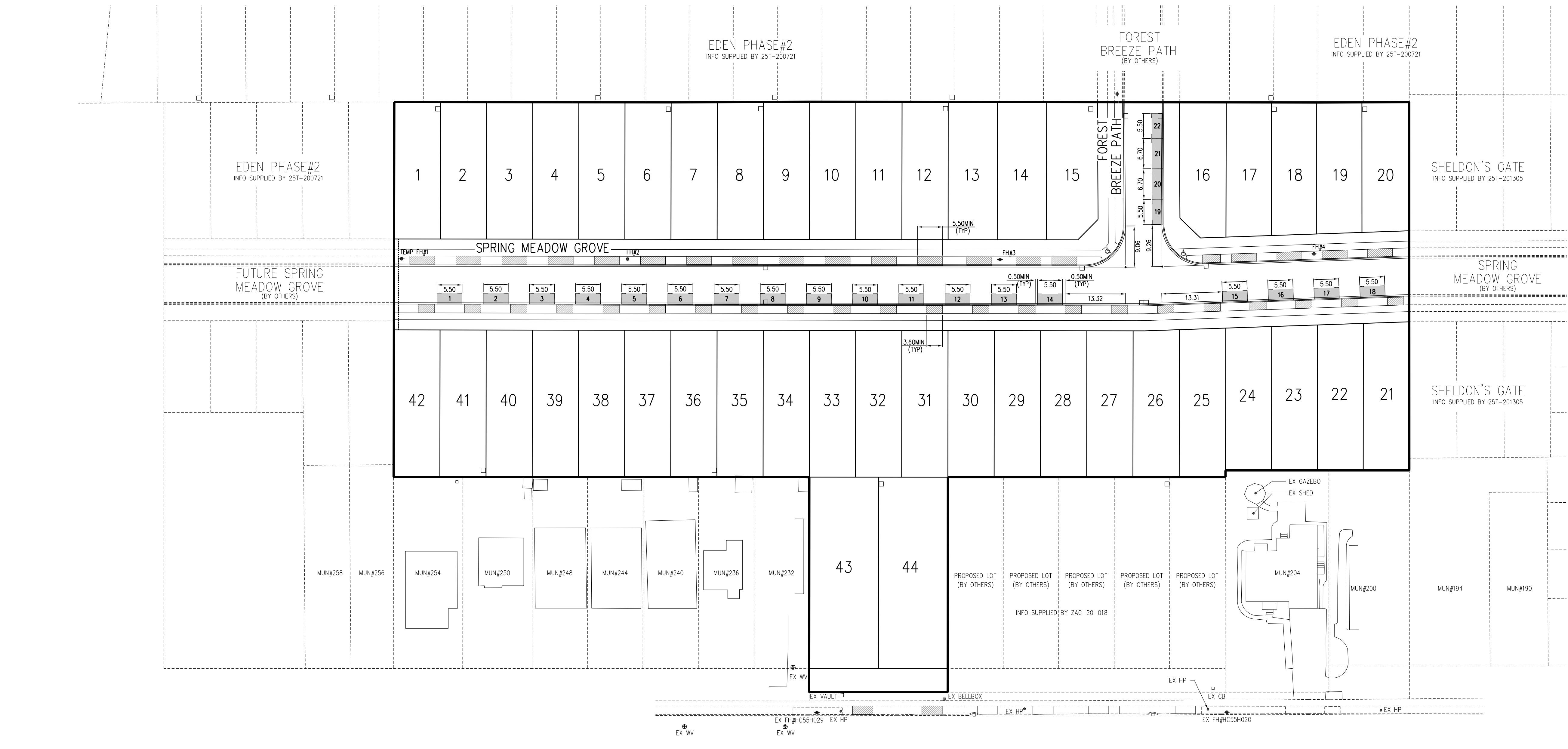
**FILE NAME:**  
F2-FOREST-PARKING-ULT-2021-4-15.dwg

**LAST SAVED BY:**  
BRUCE

**LAST SAVED DATE:**  
4/29/2021 9:29 PM

**SCALE:**  
1:500

**SHEET No.:**  
F2



- ON-STREET PARKING RESTRICTIONS**  
**LOCATION OF PARKING SPACES:**
- WITHIN THE STREET BLOCK CONTAINING THE UNITS AND/OR ON EITHER SIDE OF AN ABUTTING INTERSECTION STREET WITHIN THE FLANKAGE OF THE CORNER LOT;
  - ON ONE SIDE OF THE STREET ONLY;
  - A MINIMUM OF 0.5m SETBACK FROM EITHER SIDE OF THE DRIVEWAY RAMP / CURB OPENING;
  - A MINIMUM OF 9m FROM AN INTERSECTION (15m WHERE THERE ARE TRAFFIC SIGNALS), AS MEASURED FROM THE POINT OF INTERSECTION FORMED BY THE PROJECTION OF THE CURB LINES OR EDGES OF PAVEMENT WHERE THERE IS NO CURB;
  - NOT PERMITTED ACROSS FROM A "T" INTERSECTION;
  - NOT PERMITTED WITHIN 1m OF A BUS STOP;
  - NOT PERMITTED WITHIN 3m OF A FIRE HYDRANT;
  - NOT PERMITTED ALONG SCHOOL FRONTAGES;
  - NOT PERMITTED ALONG PARK FRONTAGES;
  - NOT PERMITTED IN FRONT OF A MIDBLOCK PEDESTRIAN WALKWAY OR TRAIL WHICH CONTINUES ON THE OPPOSITE SIDE OF THE STREET;
  - NOT PERMITTED WITHIN CUL-DE-SAC BULB;
  - STREET PARKING TO A MINIMUM OF 6m FROM WHEELCHAIR ACCESSIBLE CROSSWALK RAMP.
  - NO DESIGNATED ON-STREET PARKING FOR LOTS FRONTING RYMAL ROAD.

**TOTAL ON-STREET PARKING STALLS**  
 CALCULATION: 42(LOTS) X 0.40 = 16.8  
 REQUIRED: 17  
 PROVIDED: 22

