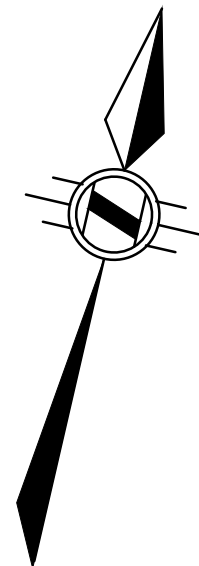


**TOPOGRAPHIC SURVEY**  
 OF PART OF  
**LOT 50**  
**CONCESSION 3**  
 GEOGRAPHIC  
**TOWNSHIP OF ANCASTER**  
 IN THE  
**CITY OF HAMILTON**

SCALE 1:200 METRIC



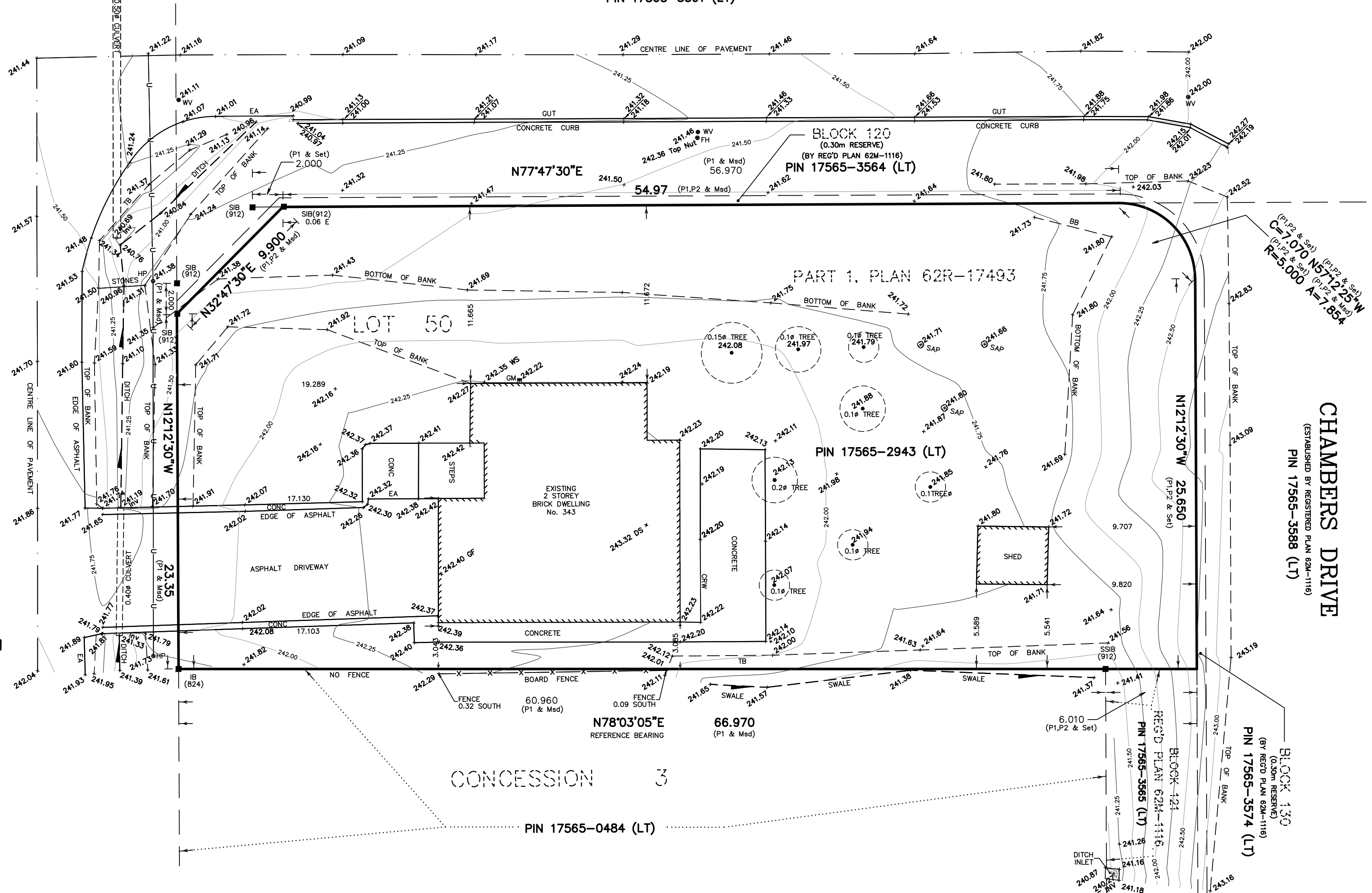
**S.D. McLAREN, O.L.S. - 2012**



**SPRINGBROOK AVENUE**  
 PIN 17565-0499 (LT)  
 ESTABLISHED BY UNREGISTERED BY-LAW No. 1137  
 20.17m RIGHT OF WAY AS SET OUT IN INSTRUMENT No. AN031374

**REGAN DRIVE**

(ESTABLISHED BY REGISTERED PLAN 62M-1116)  
 PIN 17565-3591 (LT)



**BENCHMARK NOTE**

**ELEV.=246.851**

MONUMENT NO.: 75U075  
 TOWNSHIP: TOWN OF ANCASTER  
 Deep bench mark in manhole at Garners Cemetery, along Southcote Road 0.2 km north of intersection of Hwy. 53, 11.6 m west of centre line of Southcote Road, 21.9 m northwest of hydro pole on east side of roadway, 1.8 m south of fence, at road level. Elevation - 246.851 m 809.879 ft.

**LEGEND:**

- DENOTES MONUMENT SET
- MONUMENT FOUND
- IB IRON BAR
- SIB STANDARD IRON BAR
- SSIB SHORT STANDARD IRON BAR
- 824 A.T. McLAREN, O.L.S.
- 912 A.J. CLARKE O.L.S.
- Msd MEASURED
- P1 PLAN 62R-17493
- P2 REGISTERED PLAN 62M-1116
- DS DOOR SILL
- GF GARAGE FLOOR
- WS WINDOW SILL
- EA EDGE OF ASPHALT
- CV CULVERT
- TB TOP OF BANK
- BB BOTTOM OF BANK
- Inv INVERT
- CONC CONCRETE
- WV WATER VALVE
- GUT GUTTER
- GM GAS METER

**METRIC NOTE**

DISTANCES SHOWN ON THIS PLAN ARE IN METRES AND CAN BE CONVERTED TO FEET BY DIVIDING BY 0.3048

**BEARING NOTE:**

BEARINGS ARE ASTROMOMIC AND ARE REFERRED TO THE SOUTHERN LIMIT OF PART 1 AS SHOWN ON PLAN 62R-17493, HAVING A BEARING OF N78°03'05\"/>

JUNE 12, 2012  
 DATE

*S.D. McLaren*  
 S. DAN McLAREN, O.L.S.

© S.D. McLAREN, O.L.S. - 2012. NO PERSON MAY COPY REPRODUCE, DISTRIBUTE OR ALTER THIS PLAN IN WHOLE OR IN PART WITHOUT THE WRITTEN PERMISSION OF S.D. McLAREN, O.L.S.

**A.T. McLaren Limited**  
 LEGAL AND ENGINEERING SURVEYS  
 69 JOHN STREET SOUTH, SUITE 230  
 HAMILTON, ONTARIO, L8N 2B9  
 PHONE (905) 527-8559 FAX (905) 527-0032  
 Drawn: J.B. Checked: RBM. Crew Chief: M.W.F. Scale: 1:200. Dwg.No.: 33719