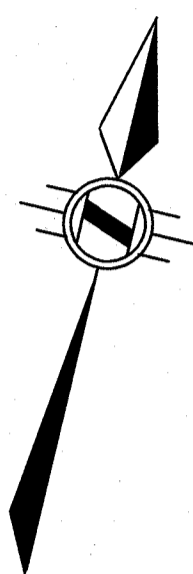


**TOPOGRAPHIC SURVEY**  
 OF PART OF  
**LOT 43**  
**CONCESSION 3**  
 GEOGRAPHIC  
**TOWNSHIP OF ANCASTER**  
 IN THE  
**CITY OF HAMILTON**

SCALE 1:150 METRIC

S.D. McLAREN, O.L.S. - 2021



**BENCHMARK:**

MONUMENT 0011975U132  
 PUMPING STATION, WILSON STREET AT  
 SEMINOLE ROAD, TABLET IN TOP OF  
 CONCRETE WELL 27.4m SOUTHEAST OF  
 CENTRELINE OF WILSON STREET, 18.0m  
 NORTHEAST OF CENTRELINE OF SEMINOLE  
 ROAD, 15.2m SOUTHEAST OF HYDRO POLE,  
 8.2m SOUTHWEST OF SOUTH CORNER OF  
 PUMP HOUSE.  
 ELEVATION: 248.131 metres CGVD-1928:1978

**NOTE:**

UNDERGROUND SERVICE AND UTILITY LOCATIONS WERE  
 DERIVED FROM DRAWING BY CITY OF HAMILTON DRAWING  
 No. 02-H-55 (SHEET 5 OF 6)  
 UNDERGROUND SERVICE AND UTILITY LOCATIONS MUST BE  
 VERIFIED PRIOR TO CONSTRUCTION  
 INVERTS MUST BE VERIFIED PRIOR TO CONSTRUCTION

**LEGEND:**

- DENOTES MONUMENT SET
- MONUMENT FOUND
- IB IRON BAR
- PC PLASTIC BAR
- OC CUT CROSS
- SB STANDARD IRON BAR
- SSB SHORT STANDARD IRON BAR
- R24 A.T. McLAREN, O.L.S.
- 912 A.J. CLARKE, O.L.S.
- 1215 J.D. PETERS, O.L.S.
- OU ORIGIN UNKNOWN
- Md MEASURED
- P1 PLAN 62R-1873
- P2 PLAN 62R-21439
- P3 PLAN BY A.T. McLAREN, O.L.S.
- P4 DATED MARCH 3, 2015 FILE 34584
- P5 PLAN 62R-17791
- P6 PLAN 62R-11072
- P7 PLAN BY MCKAY MCKAY & PETERS
- P8 DATED JULY 23, 1974 FILE S-5363-A
- P9 WENTWORTH VACANT LAND CONDOMINIUM PLAN 607
- LSA LANDSCAPE AREA
- WCRB WOOD CURB
- SRW STONE RETAINING WALL
- FS FIELD STONE
- PS PAVED STONE
- USB UNDERGROUND BELL BOX
- FH FIRE HYDRANT
- WV WATER VALVE
- CV CULVERT
- INV INVERT
- HP HYDRO POLE
- LU OVERHEAD UTILITIES
- LS LIGHT STANDARD
- LP LIGHT POST
- OS OIL STORAGE
- GB GARAGE FLOOR
- MH MANHOLE
- CB CATCH BASIN
- MB MAIL BOX
- BO BOLLARD
- EVG EVERGREEN
- DV DIAMETER
- /// NOT TO SCALE

**BEARING NOTE:**

BEARINGS ARE UTM GRID, DERIVED FROM OBSERVED  
 REFERENCE POINTS A AND B, BY REAL TIME NETWORK  
 OBSERVATIONS, UTM ZONE 17, NAD83 (CSRS) (2010.0)

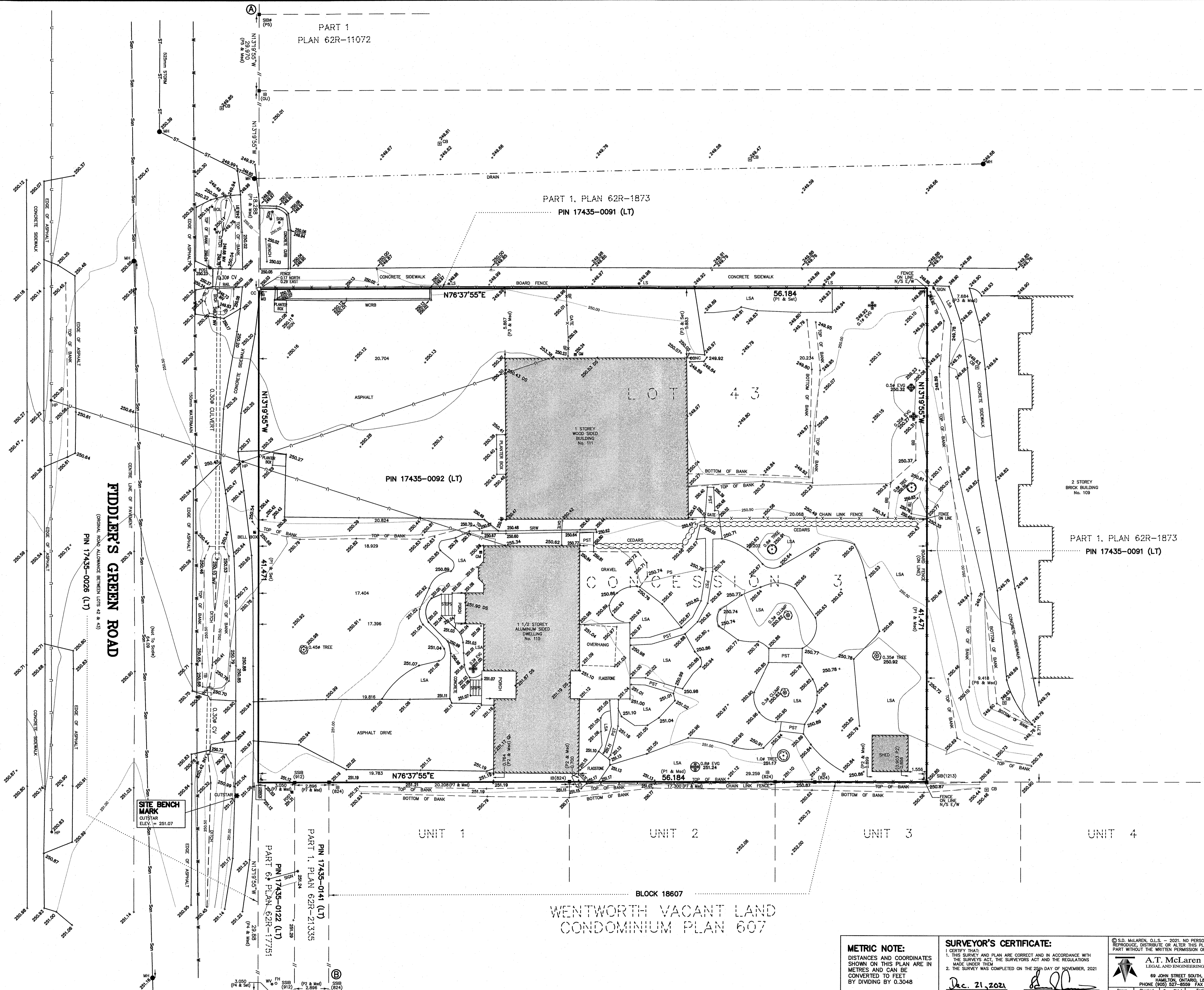
**NOTE:**

DISTANCES ARE GROUND AND CAN BE CONVERTED TO GRID BY  
 MULTIPLYING BY THE COMBINED SCALE FACTOR OF 0.999649519

**INTEGRATION DATA**

POINT ID	NORTHING	EASTING
CRP (1)	4785344.274	582300.783
CRP (2)	4785236.244	582332.473

COORDINATES CANNOT, IN THEMSELVES, BE USED TO  
 RE-ESTABLISH CORNERS OR BOUNDARIES SHOWN ON THIS PLAN.



**METRIC NOTE:**

DISTANCES AND COORDINATES  
 SHOWN ON THIS PLAN ARE IN  
 METRES AND CAN BE  
 CONVERTED TO FEET  
 BY DIVIDING BY 0.3048

**SURVEYOR'S CERTIFICATE:**

I CERTIFY THAT:  
 1. THE SURVEY AND PLAN ARE CORRECT AND IN ACCORDANCE WITH  
 THE SURVEY ACT, THE SURVEYORS ACT AND THE REGULATIONS  
 MADE UNDER THEM  
 2. THE SURVEY WAS COMPLETED ON THE 21st DAY OF NOVEMBER, 2021  
 DATE Dec 21, 2021  
 S. DAN McLAREN, O.L.S.

© S.D. McLAREN, O.L.S. - 2021. NO PERSON MAY COPY  
 REPRODUCE, DISTRIBUTE OR ALTER THIS PLAN IN WHOLE OR IN  
 PART WITHOUT THE WRITTEN PERMISSION OF S.D. McLAREN, O.L.S.

**A.T. McLaren Limited**  
 LEGAL AND ENGINEERING SURVEYS  
 69 JOHN STREET SOUTH, SUITE 230  
 HAMILTON, ONTARIO, L9N 2B9  
 PHONE (905) 527-8558 FAX (905) 527-0032  
 Drawn by: [Signature] Checked by: [Signature] Drawn Date: [Signature] Scale: 1:150 Draw No. 36829