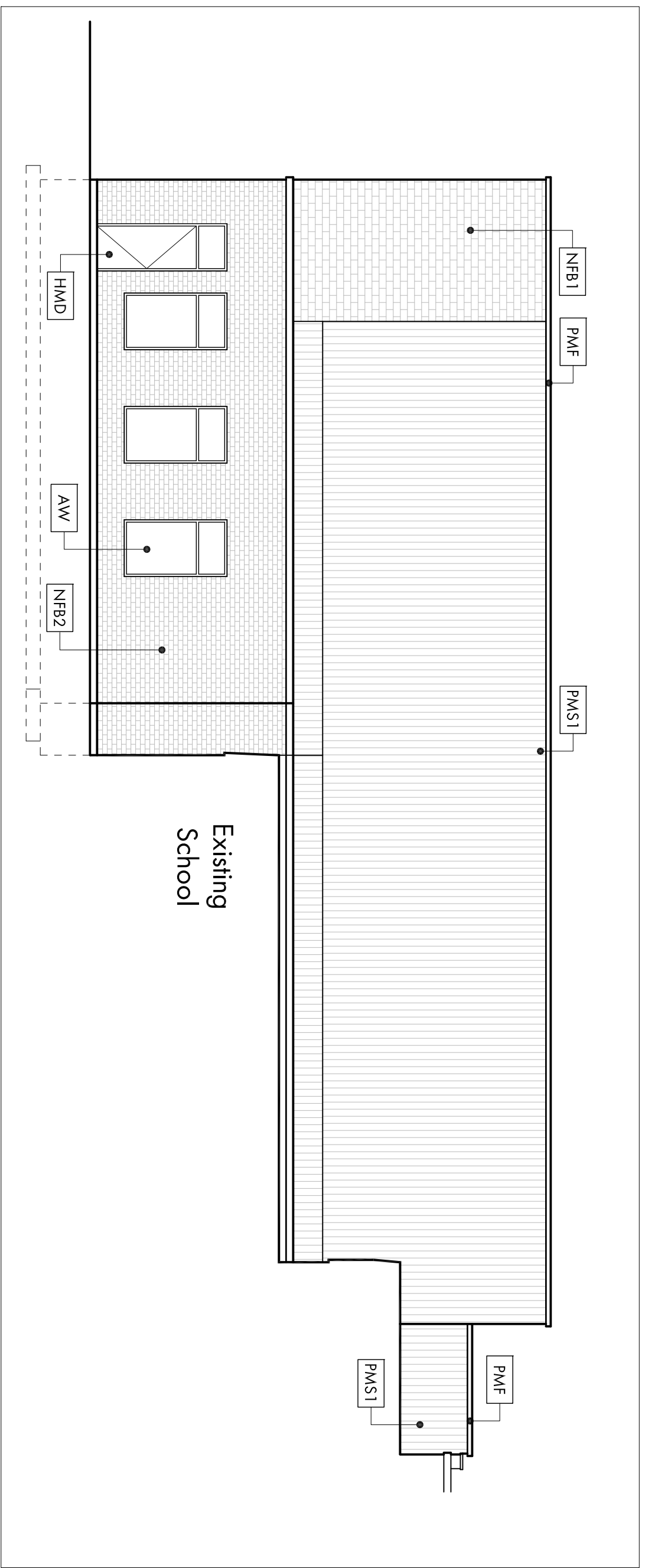
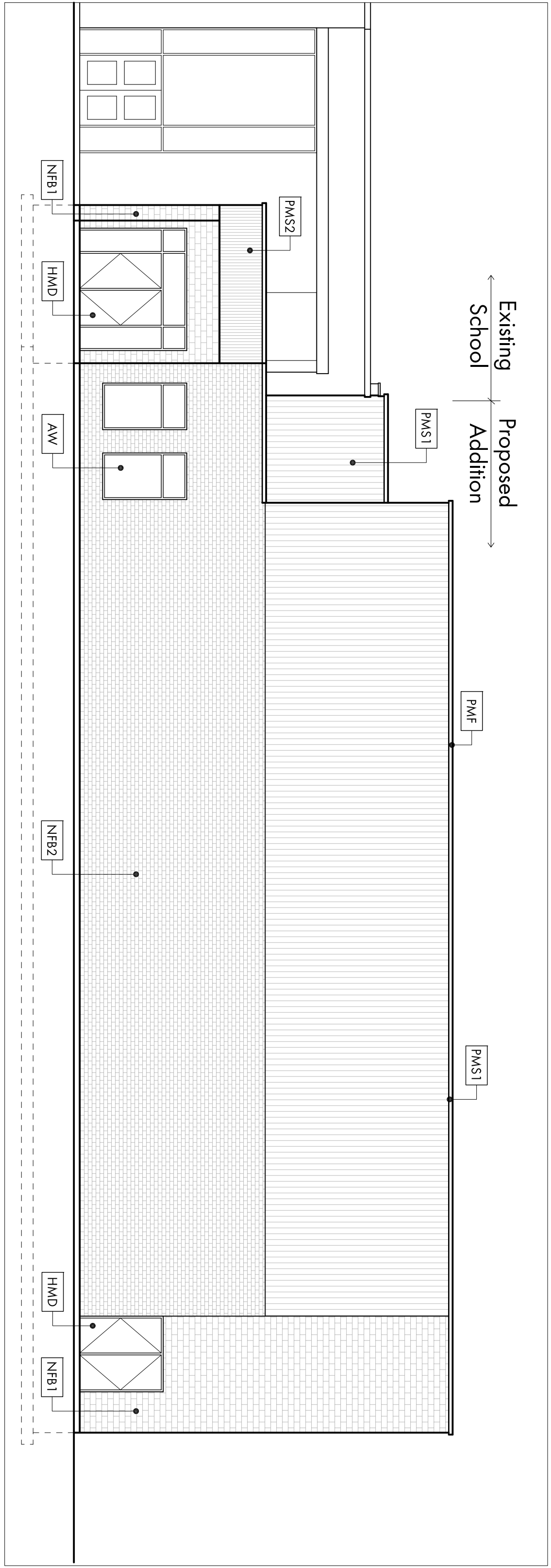


SOUTH ELEVATION
SCALE: 1:100

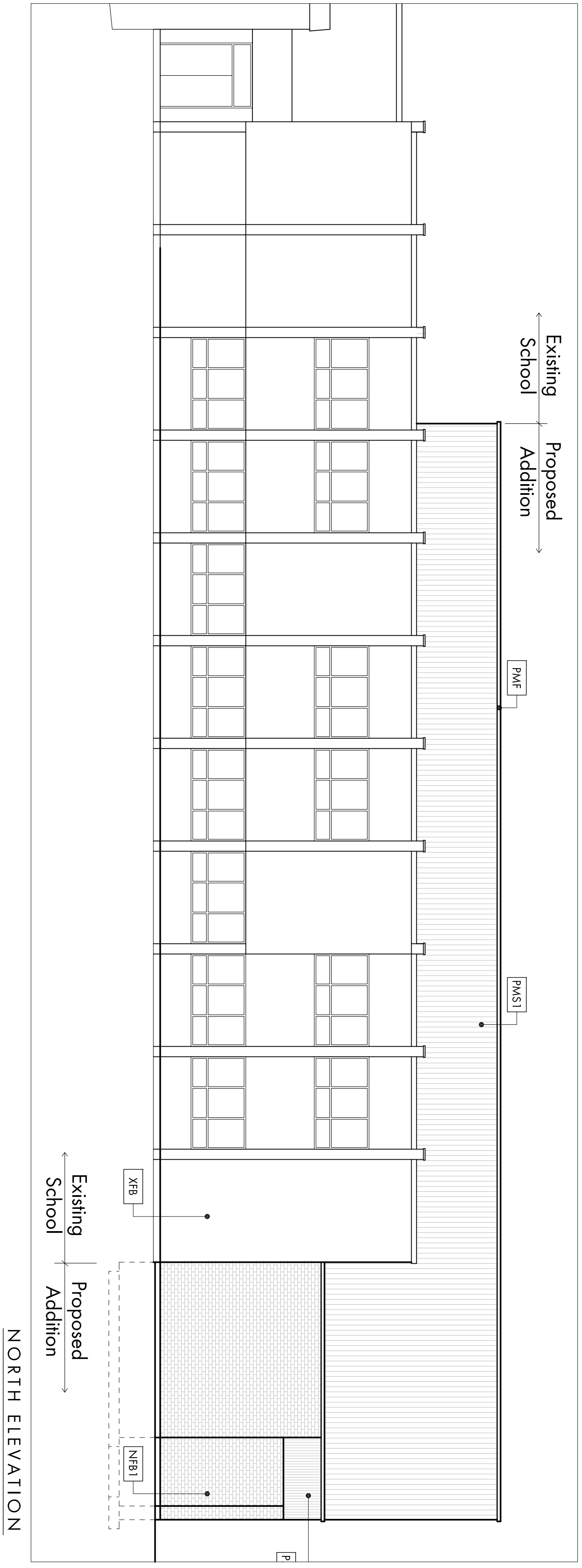


EAST ELEVATION
SCALE: 1:100

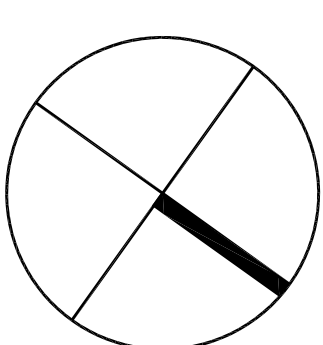


WEST ELEVATION
SCALE: 1:100

- EXTERIOR BUILDING MATERIAL KEYING**
- MASONRY VENEER:**
- NFB1** NEW FIELD BRICK - 200mm x 100mm x 75mm (8" x 4" x 3") PERMANENT WHITE VENEER - JACO BRICK AS SUPPLIED BY CANADA BRICK, FINISH: BOND INSULATION PATTERNS
 - NFB2** NEW KAZEN BRICK - 200mm x 100mm x 75mm (8" x 4" x 3") PERMANENT WHITE VENEER - KAZEN BRICK AS SUPPLIED BY CANADA BRICK, FINISH: BOND INSULATION PATTERNS
 - XFB** EXISTING FIELD BRICK
 - XBP** EXISTING PERC/AS PANELS
- METAL CLADDING MATERIALS:**
- PMF** PRE-FINISHED METAL FLASHING
 - PMAS1** BRICK-SHAPE METAL, PRE-FINISHED IN COLOR DARK BRONZE
 - PMAS2** PRE-FINISHED METAL SINGLES
 - PMAS3** 40mm x 20mm CORRUGATED SINGLES, FINISH: VERTICAL THROUGHTS IN COLOR: RAIN (80 GALV/ALUMNE PLYS) AS PER SPECIFICATIONS
 - PMAS4** PRE-FINISHED METAL SINGLES, VERTICAL THROUGHTS IN STANDARD (90mm x 10mm) DEEP PROFILE IN COLOR: SERRAVALI PRODUCT TO BE AS MANUFACTURED BY METALINK
 - XMS** EXISTING METAL SINGLES
- WINDOWS & DOORS:**
- AW** SYSTEM WITH INSULATED VISION GLASS, OPERABLE, VENTING, UNITS AS PER SPECIFICATIONS AND RELATED SCHEDULES - DARK BRONZE ANODIZED FINISH
 - HMD** HOLLOW METAL DOOR FRAME AND SERRAVALI SCHEDULES AS APPLICABLE AS PER SPECIFICATIONS AND RELATED SCHEDULES



NORTH ELEVATION
SCALE: 1:100



PROJECT:
Interior Renovations for:
GUIDO de BRES
CHRISTIAN HIGH SCHOOL
350 Alblight Road,
Stoney Creek, ON

SCALE:

DRAWING TITLE:
Proposed Gym Addition Elevations

SCALE:
As Noted

DRAWN:
DVG

DATE:
October 2022

PROJECT #:
2251

WHITELINE Architects Inc.
83 ONTARIO STREET
ST. CATHARINES
ONTARIO L2R 5J5
905-688-6087
www.whitelinearchitects.com

DRAWING #:
A3-1

THESE DRAWINGS ARE NOT TO BE SCALED!

ALL DIMENSIONS, THE DESIGN AND THE DETAILS ARE THE PROPERTY OF THE ARCHITECT AND ARE NOT TO BE ALTERED, REPRODUCED, COPIED, OR TRANSMITTED IN ANY MANNER WITHOUT THE WRITTEN PERMISSION OF THE ARCHITECT.

THE CONTRACTOR MUST VERIFY ALL DIMENSIONS AND MUST CORRECT ANY DISCREPANCIES AND BE RESPONSIBLE FOR ANY CHANGES TO THE ARCHITECT PRIOR TO COMMENCING THE RELEVANT WORK.

ALL DRAWINGS, DETAILS & SPECIFICATIONS MUST BE USED FOR CONSTRUCTION ONLY WHEN ISSUED IN THE RESOLUTIONS FOR REVIEW.

1. SPA 1	Nov 29 2022
2. SPA 2	Apr 2023